

# projects from the runway

brother®

project  
**RUNWAY**<sup>™</sup>  
©2017 Brother International Corporation. All Rights Reserved.  
projectrunway.com



## Joshua Cook

Custom Laptop Case

**Are you in need of a protective case to cover your laptop?** Here, you will learn just how I created my very own personalized laptop case using my Brother™ CE7070PRW Project Runway™ Limited Edition sewing machine.

**MATERIALS:** Neoprene fabric, binding, scissors, thread, tape measure, pencil, thick marker.

# 1

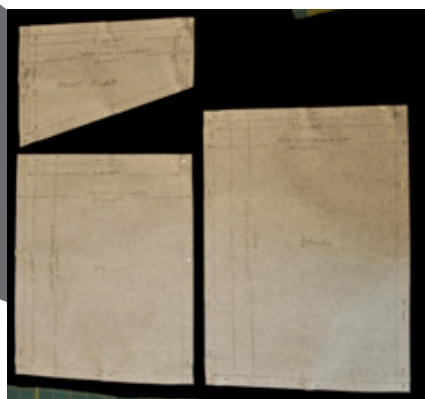
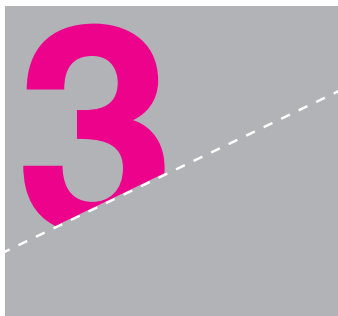
Measure the dimensions of your existing laptop, draw out the appropriate squares and add a ½ inch seam allowance to each side.





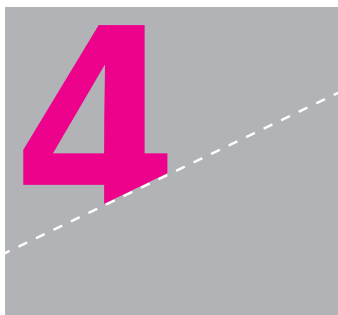
Cut out your 3 pattern pieces (Back, Front, and Front Flap).

*(Note: I, of course, like to have a little fun with angles, so as you can see, my front flap is angled; however, feel free to make it straight if you like that look better!)*



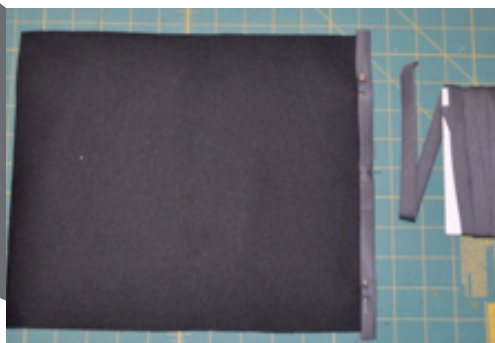
Lay your 3 cut pattern pieces onto your choice of fabric.

*(Note: I chose to work in neoprene, but feel free to work with a fabric of your choice; just make sure it has a nice protective weight to it!)*



After positioning your 3 pattern pieces, pin or weigh down your pieces, and cut.

*(Note: If you have a print, have a little fun with the placement of your pieces, and if you are feeling extra adventurous, consider using 3 different fabrics if you would enjoy making an eccentric laptop case!)*

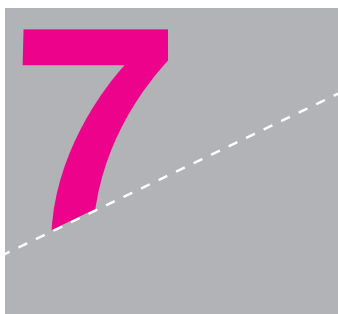


Choose a binding color of your choice to trim the edges. Proceed to binding one width side of your “front” pattern piece and top stitch binding.

*(Note: I have chosen to use a contrasting binding and thread color to pop the demonstration; it also adds, however, to an interesting design element if you choose to do the same.)*



Lay your “front” piece on top of your “bottom” piece and pin along the bottom width.



Lay your “front flap” on the opposite side of your “bottom” piece along the width, and pin.



8

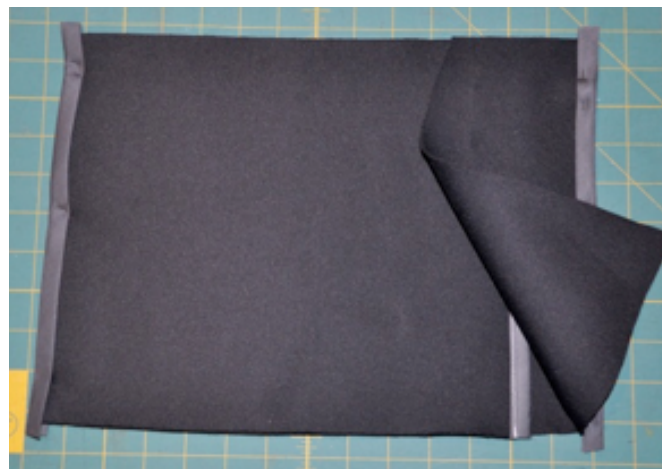
Stay stitch the pieces together.

*(Note: I used the stay stitch for a little more “give,” although this stitch will ultimately be covered with binding.)*



9

Pin your binding to each end of your case, covering your previous stay stitch and top stitch. Feel free to get creative with any of the fabulous 70 decorative stitches that you may like!

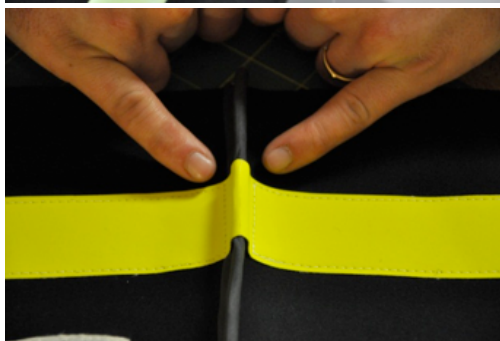




10

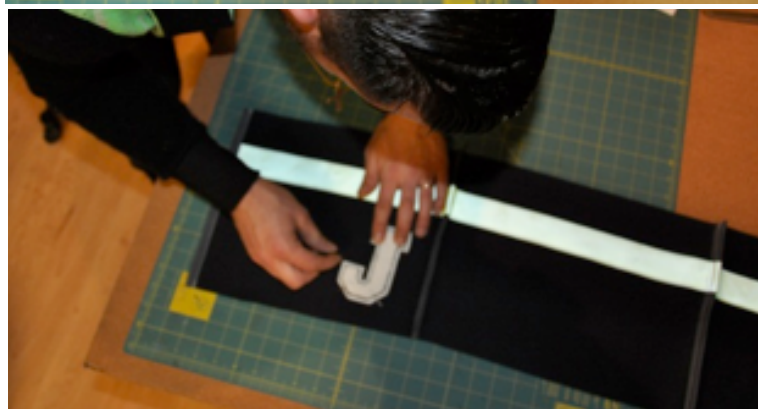
Lay out the shell of your laptop case flat on the table, and measure out 1 yard of your favorite trim, and pin down in the position of your liking and top stitch down.

*(Note: Where the binding has already been sewn, you must pinch up your trim appropriately, almost creating a slight loop as to not sew down/over the binding. Use the photo as a reference for a visual explanation.)*



11

At this time, place any other additional patches you may like and sew in place. I have chosen to use my initial to give the laptop case a very collegiate, letterman look. Remember, this is another opportunity for you to really make your laptop case unique and one-of-a-kind!





12

Place binding to the “front flap” edge, pin in place and top stitch.



13

Fold your custom laptop case together and decide where you want to put your snap to secure the closure, and make a mark.



14

Fasten your snaps into place or whatever closure you choose for your preference.





Place binding on both sides of the raw edges with an extra inch on the ends. Before stitching, fold the extra inch under and then pin to give yourself a clean edge.



Top stitch the remaining binding with clean, finished edges (as described in reference photos) and iron.





Inset your personal laptop computer and make all your friends jealous!



(This project was created from the designer's perspective.)

done