

# Quick Reference Guide

---

Stichwortregister

Guide de référence rapide

Beknopte bedieningsgids

Guida di riferimento rapido

Guía de referencia rápida

Hurtigguide

Snabbstarts guide

Hurtig referenceguide

Pikaopas

Краткий справочник



**Refer to the operation manual for detailed instruction.**

Ausführliche Hinweise finden Sie in der Bedienungsanleitung.

Reportez-vous au manuel d'instructions pour des informations détaillées.

In de bedieningshandleiding vindt u uitvoerige aanwijzingen.

Consultare il manuale d'istruzione per istruzioni dettagliate.

Consulte el manual de instrucciones para obtener información detallada.

Du finner nærmere informasjon i brukerhåndboken.

Detaljerade instruktioner finns i bruksanvisningen.

Se brugsanvisningen vedrørende en detaljeret vejledning.

Käyttöohjeessa on yksityiskohtaisia lisätietoja.

Более подробная информация представлена в Руководстве по эксплуатации.

# Contents

Inhalt  
Inhoud  
Contenido  
Innehåll  
Sisällysluettelo

Table des matières  
Sommario  
Innhold  
Indhold  
Содержание

 2



## Bobbin winding and setting

Aufspulen und Einsetzen der Unterfadenspule  
Spoel winden en installeren  
Colocación y devanado de la bobina  
Spola upp undertråd och sätta in spolen  
Puolaus ja asetus

Bobinage et réglage de la canette  
Avvolgimento e impostazione della spolina  
Innstillinger for og vikling av spoler  
Vinding og isætning af spolen  
Намотка и установка шпульки



## Upper threading

Einfädeln des Oberfadens  
Bovendraad inrijgen  
Enhebrado del hilo superior  
Trä övertråden  
Ylälangan pujotus

Enfilage supérieur  
Infilatura superiore  
Træ overtråden  
Trædning af overtråd  
Заправка верхней нити

 4



## Selecting stitch patterns

Auswahl von Stichmustern  
Steekpatronen selecteren  
Selección de patrones de costura  
Välja mönster  
Ompeleen valinta

Sélection des motifs de point  
Selezione di disegni/punti  
Velge sømmønster  
Valg af stingmønstre  
Выбор рисунков строчек

 6



## Combining and saving patterns

Kombinieren und Speichern von Mustern  
Patronen combineren en opslaan  
Combinación y almacenamiento de patrones  
Kombinera och spara mönster  
Kuvioiden yhdistely ja tallennus

Combinaison et enregistrement de motifs  
Combinazione e salvataggio di disegni  
Kombinere og lagre mønstre  
Kombinering og lagring af mønstre  
Сочетание различных рисунков строчек и сохранение в памяти

 10



## Saved patterns' memo

Notizen für gespeicherte Muster  
Opgeslagen patronen  
Memoria de patrones guardados  
Kom ihåg för sparade mönster  
Tallennetut kuviot

Mémo des motifs enregistrés  
Promemoria disegni salvati  
Merknad om lagrede mønstre  
Liste over gemte mønstre  
Памятка для сохраненных рисунков

 11

## Summary of stitch patterns

Übersicht der Stichmuster  
Overzicht van steekpatronen  
Resumen de patrones de costura  
Översikt över mönster  
Ompeleiden yhteenveto

Résumé des motifs de point  
Riepilogo disegni/punti  
Oppsummering av sømmønstre  
Oversigt over stingmønstre  
Рисунки строчек

 12

# Bobbin winding and setting



Aufspulen und Einsetzen der Unterfadenspule  
 Spoel winden en installeren  
 Colocación y devanado de la bobina  
 Spola upp undertråd och sätta in spolen  
 Puolaus ja asetus

Bobinage et réglage de la canette  
 Avvolgimento e impostazione della spolina  
 Innstillinger for og vikling av spoler  
 Vinding og isætning af spolen  
 Намотка и установка шпульки

**Use only the included bobbin or bobbins of the same type.**

Verwenden Sie nur die im Lieferumfang enthaltene Spule oder Spulen vom selben Typ.

N'utilisez que la canette fournie ou une canette du même type.

Gebruik uitsluitend de bijgeleverde spoel of spolen van hetzelfde type.

Utilizzare esclusivamente la spolina fornita o spoline dello stesso tipo.

Utilice sólo la bobina suministrada o bobinas del mismo tipo.

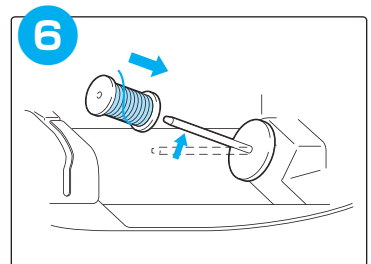
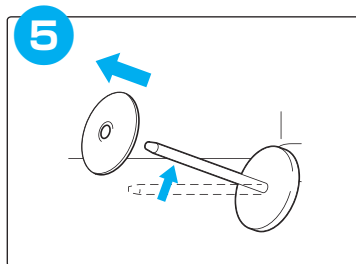
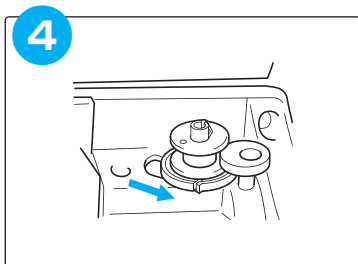
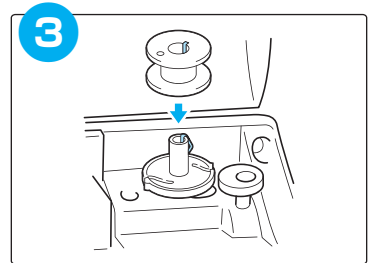
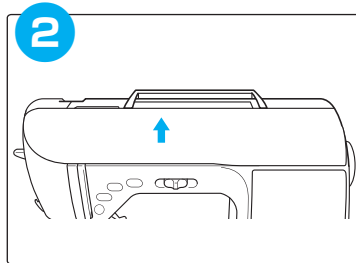
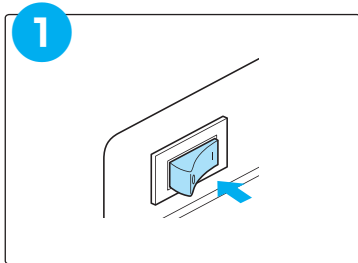
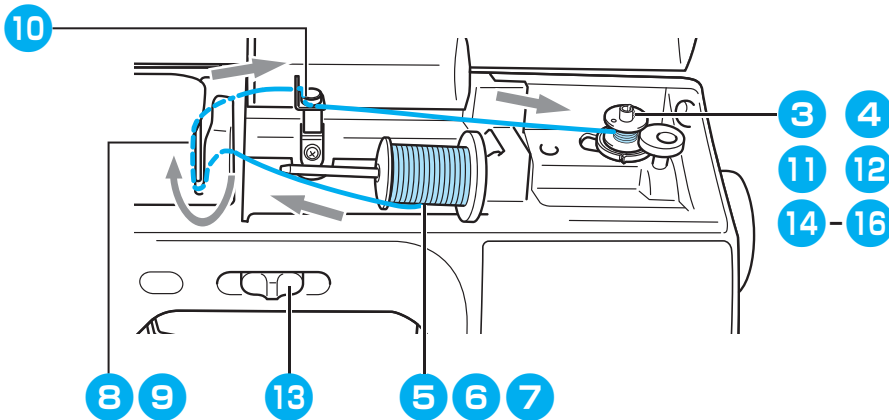
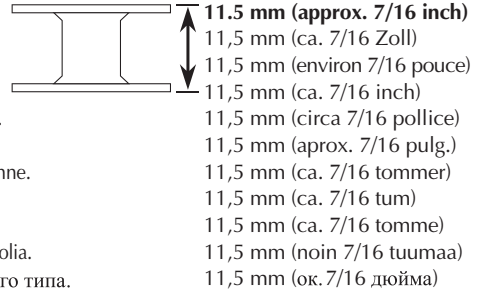
Bruk kun spolen som leveres med maskinen, eller spoler av samme type som denne.

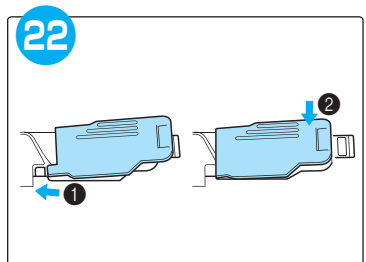
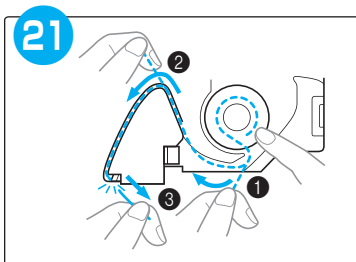
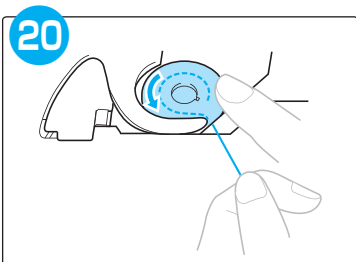
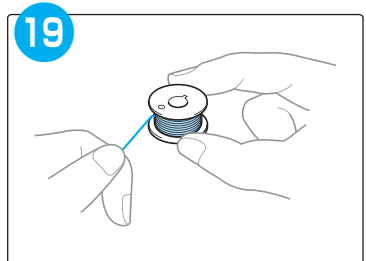
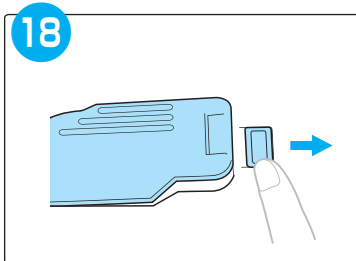
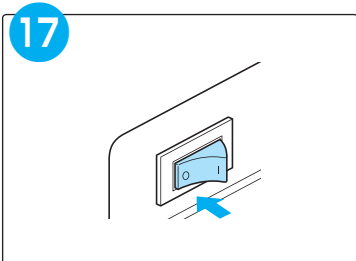
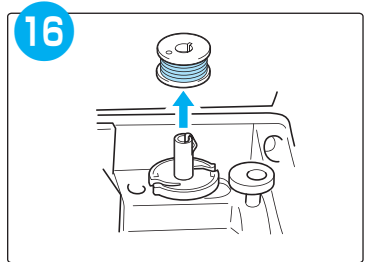
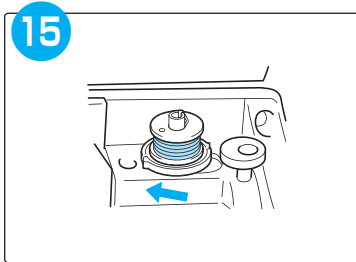
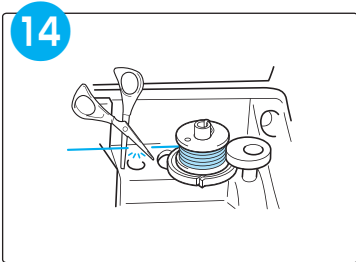
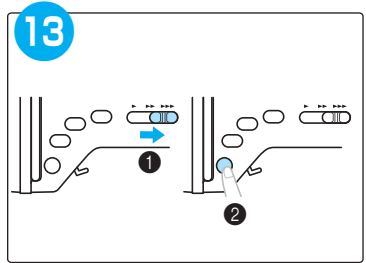
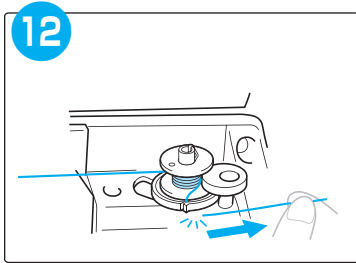
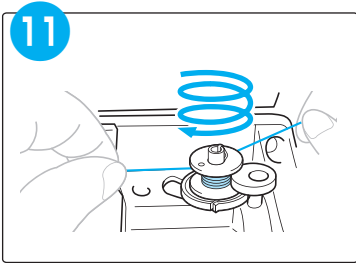
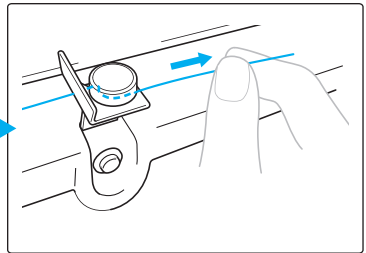
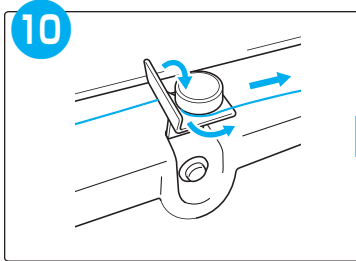
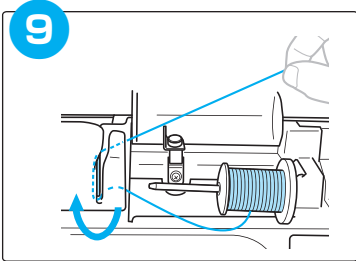
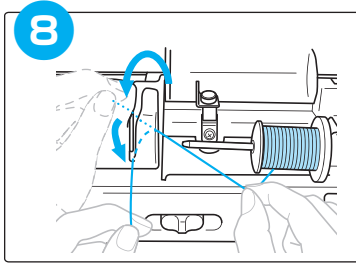
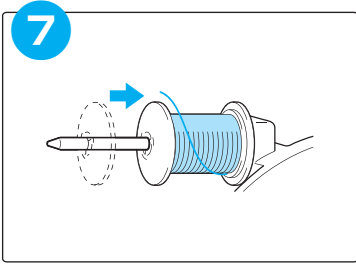
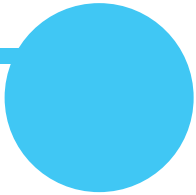
Använd bara spolen som medföljer eller spolar av samma typ.

Brug kun den medfølgende spole eller spoler af samme type.

Käytä vain tämän ompelukoneen mukana toimitettuja puolia tai samantyyppisiä puolia.

Используйте только входящую в комплект шпульку или шпульки одного типа.

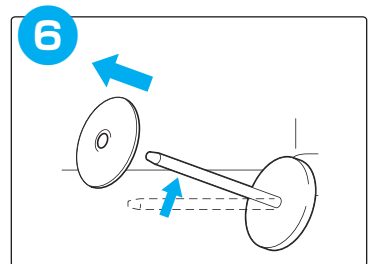
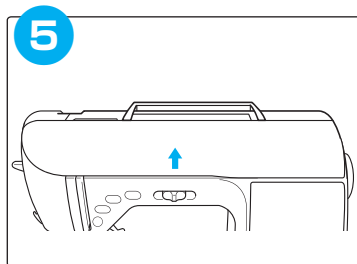
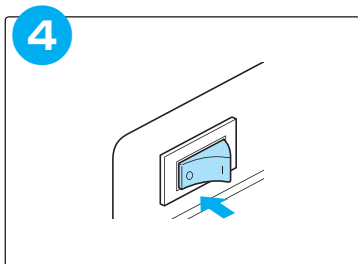
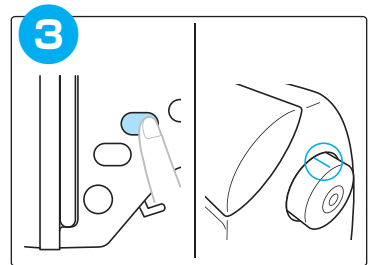
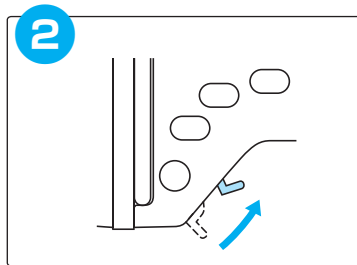
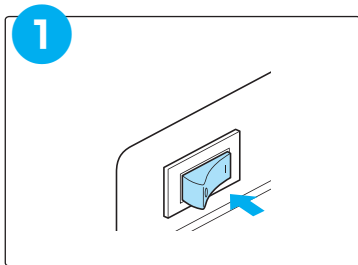
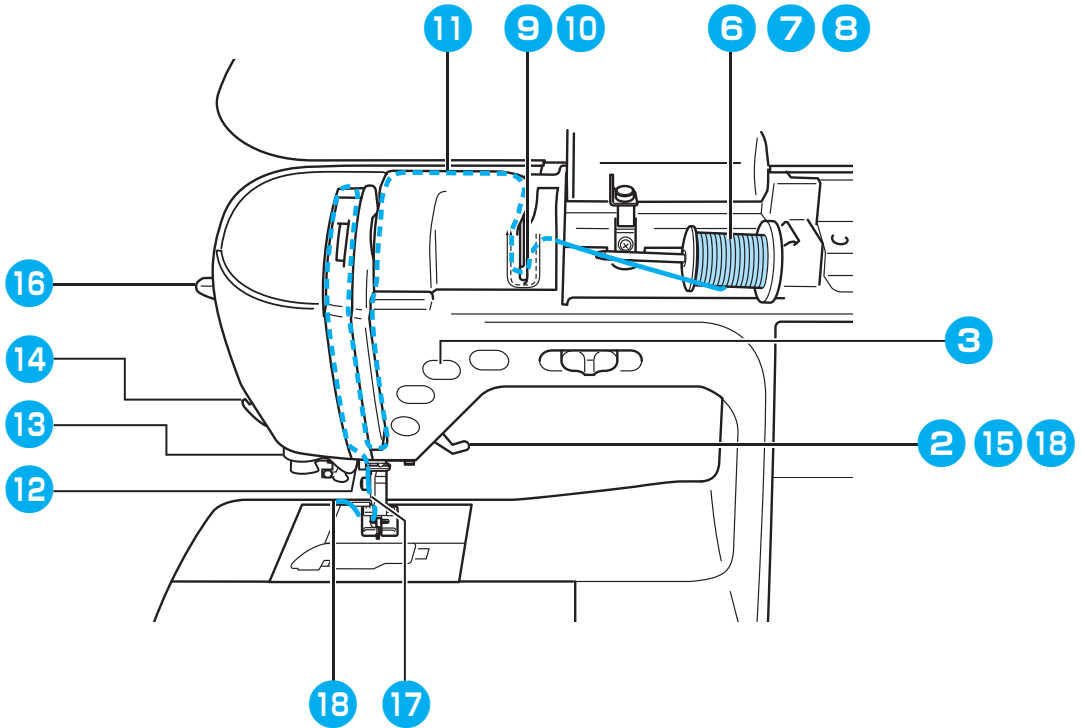


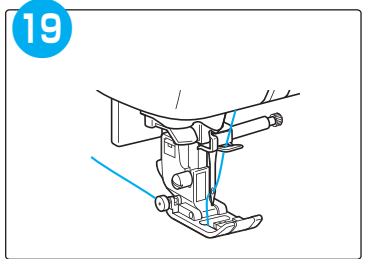
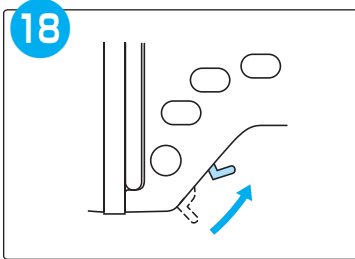
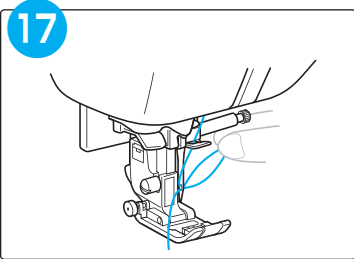
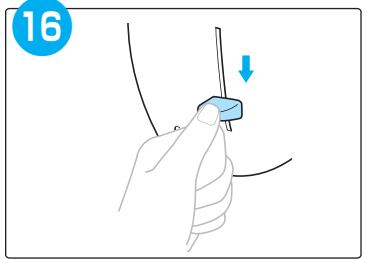
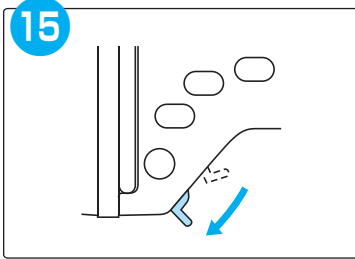
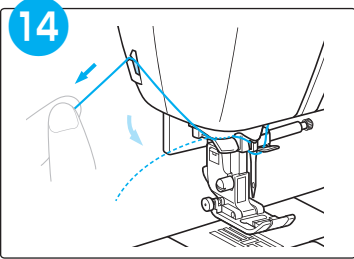
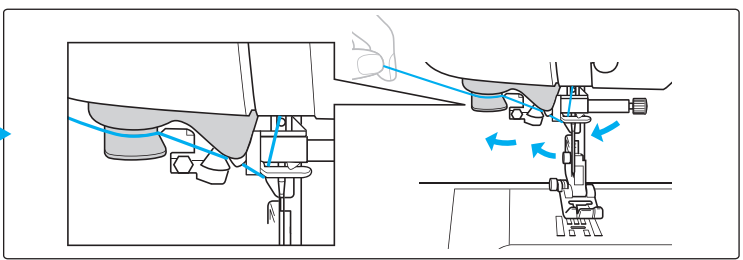
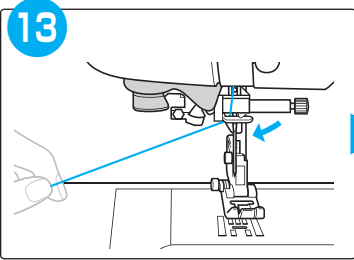
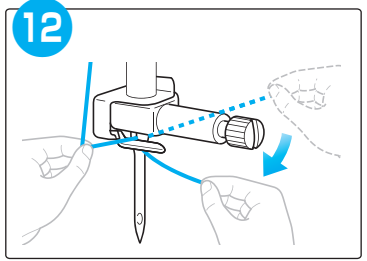
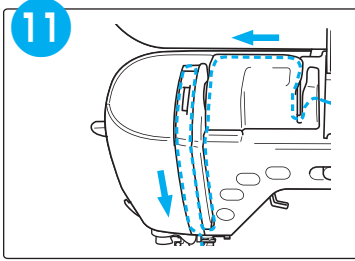
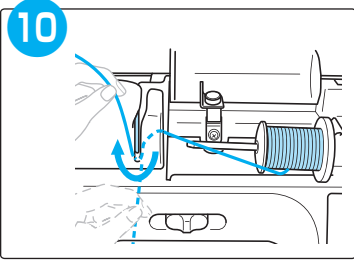
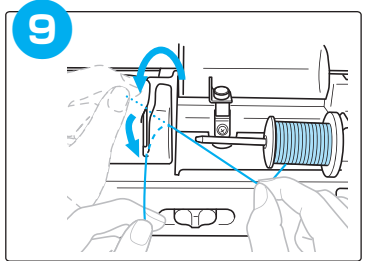
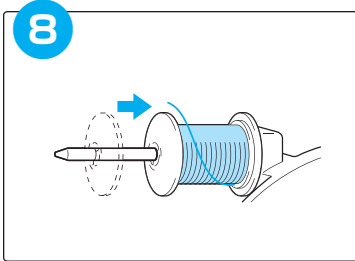
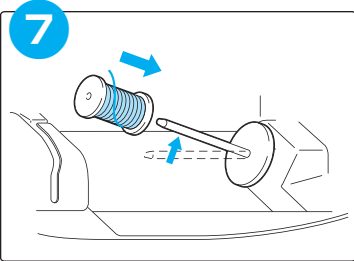
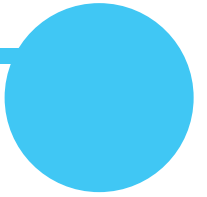


# Upper threading

Einfädeln des Oberfadens  
Bovendraad inrijgen  
Enhebrado del hilo superior  
Trå övertråden  
Ylälangan pujotus

Enfilage supérieur  
Infilatura superiore  
Træ overtråden  
Trædning af overtråd  
Заправка верхней нити





# Selecting stitch patterns

Auswahl von Stichmustern  
 Steekpatronen selecteren  
 Selección de patrones de costura  
 Välja mönster  
 Ompeleen valinta

Sélection des motifs de point  
 Selezione di disegni/punti  
 Velge sømmønster  
 Valg af stingmønstre  
 Выбор рисунков строчек

## Preset utility stitch/ saved pattern

Voreingestellter Nutzstich/  
 Gespeichertes Muster

Préréglage de point de  
 couture courant/motif  
 enregistré

Vooraf ingestelde naaisteek/  
 opgeslagen patroon

Punto utile preimpostato/  
 disegno salvato

Costura con aplicaciones  
 preajustada/patrones  
 guardados

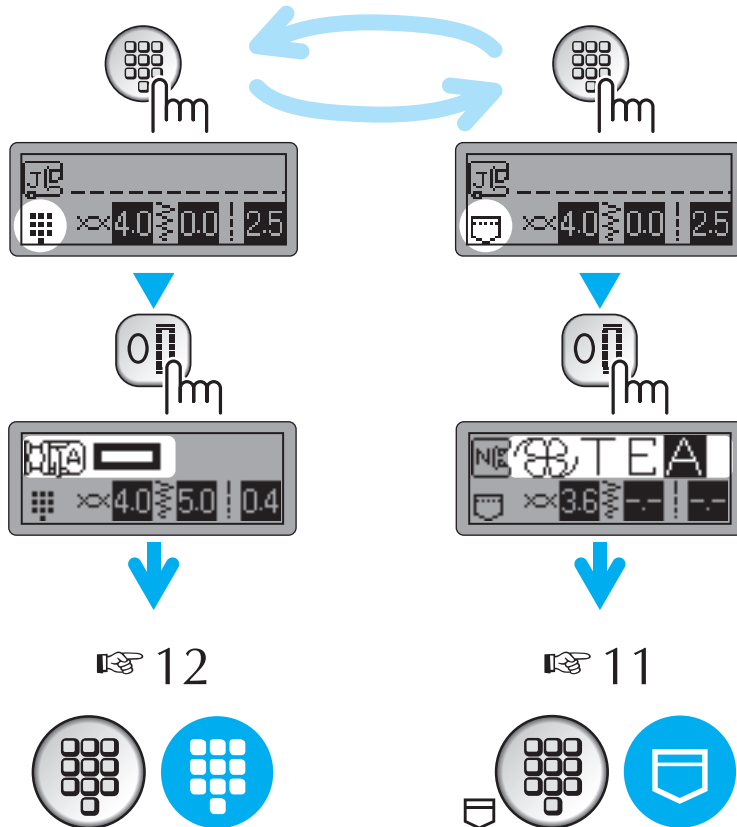
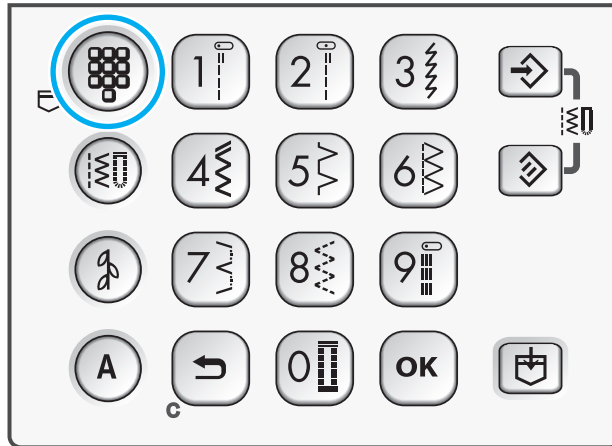
Forhåndsinnstilt nyttesøm/  
 lagret mønster

Förinställd nyttosöm/  
 sparat mönster

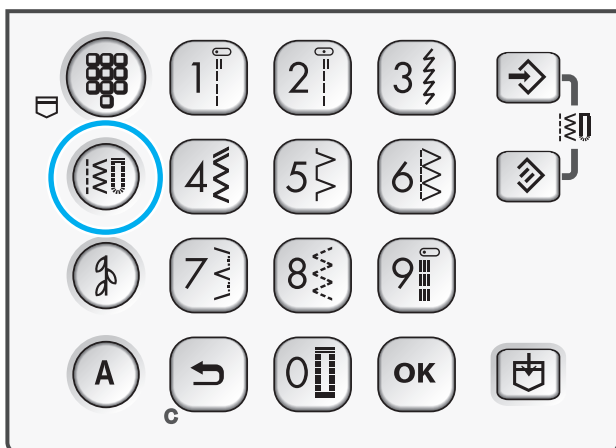
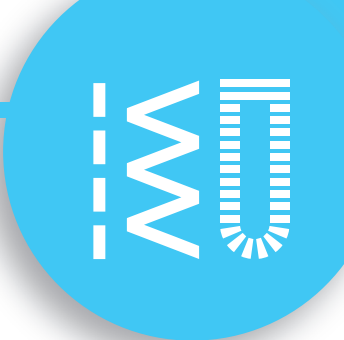
Forinstillede brugssting/  
 gemt mønster

Esiasetettu hyötöyömmel/  
 tallennettu kuvio

Стандартная обычная строчка /  
 сохраненный рисунок

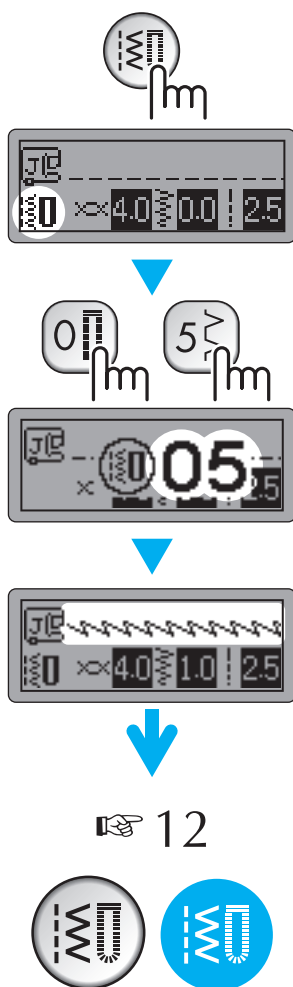






### Utility stitches

- Nutzstiche
- Points de couture courants
- Naaisteken
- Punti utili
- Puntadas con aplicaciones
- Nyttesøm
- Nyttosömmar
- Brugssting
- Hyötyompeleet
- Обычные строчки





**Decorative stitches**

Dekorstiche

Points décoratifs

Decoratieve steken

Punti decorativi

Puntadas decorativas

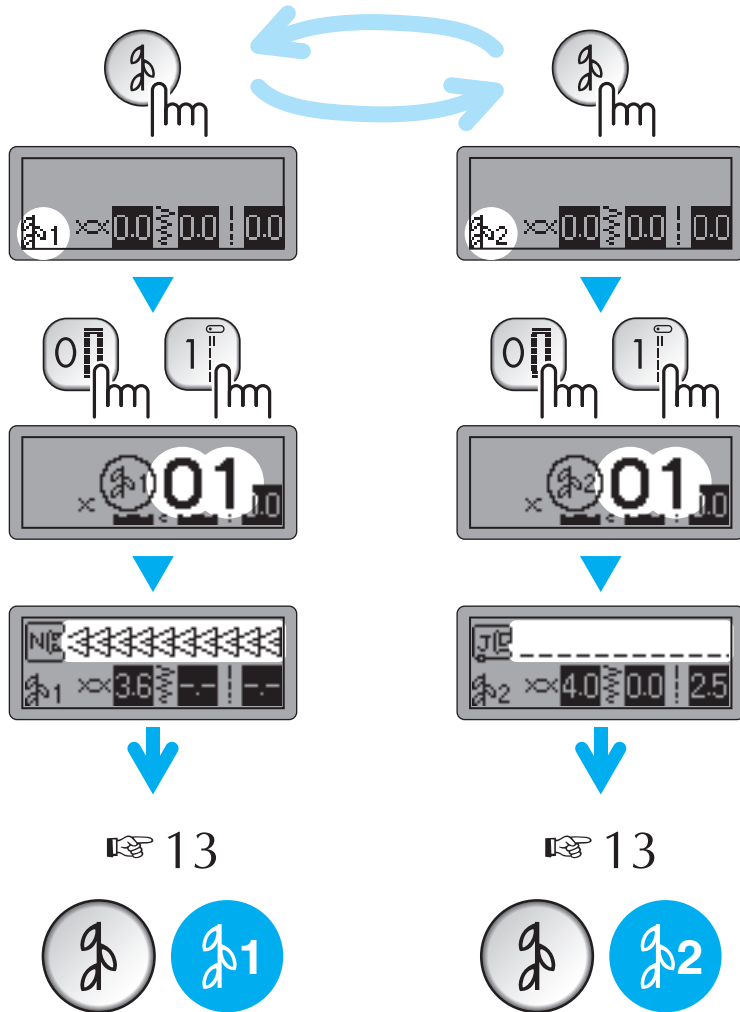
Dekorsøm

Dekorativa sömmar

Dekorationssting

Koristeompeleet

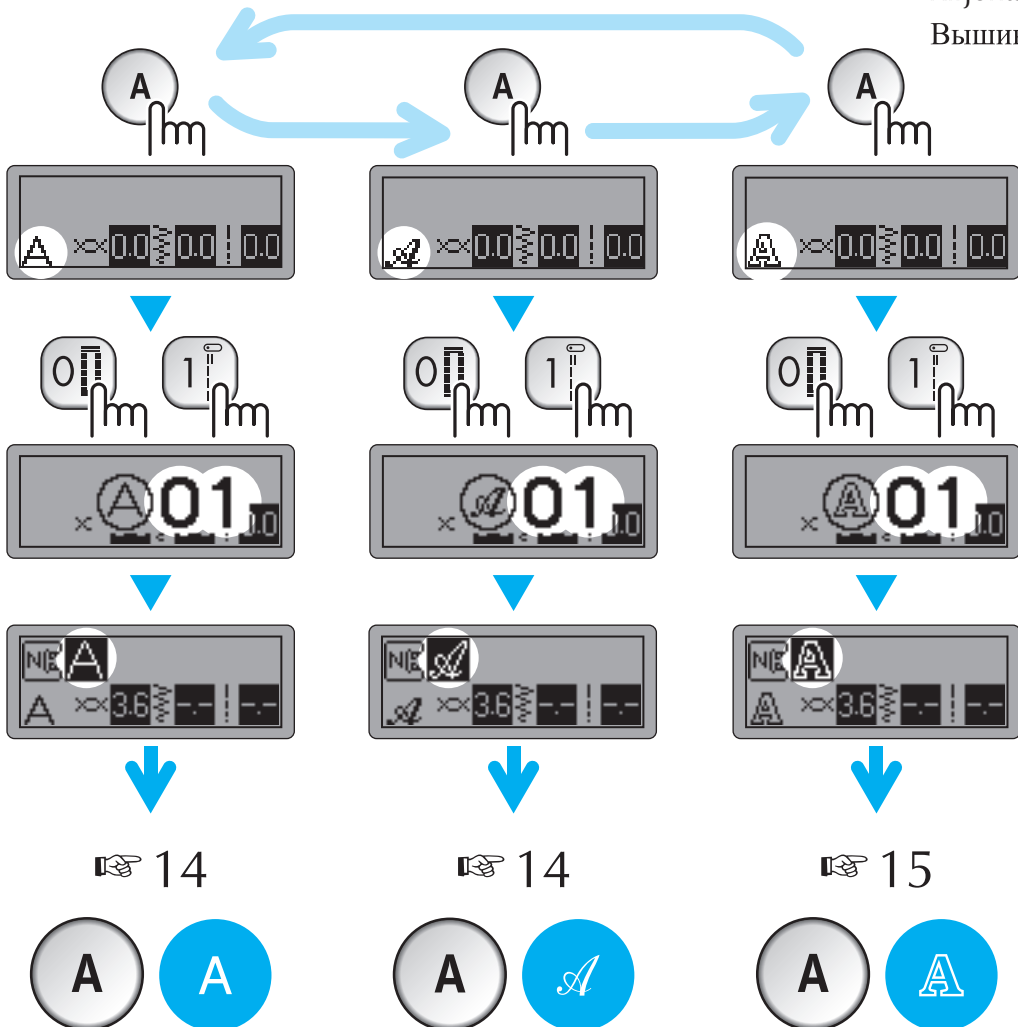
Декоративные строчки



# A



- Character stitches**  
 Buchstabenstiche  
 Points caractères  
 Lettersteken  
 Punti caratteri  
 Puntadas de caracteres  
 Bokstavsøm  
 Teckensnittssömmar  
 Tegnsting  
 Kirjontaompleet  
 Вышивание текста





# Combining and saving patterns

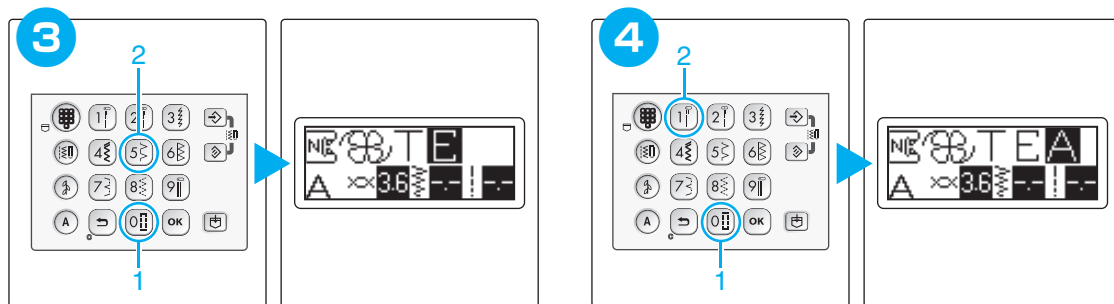
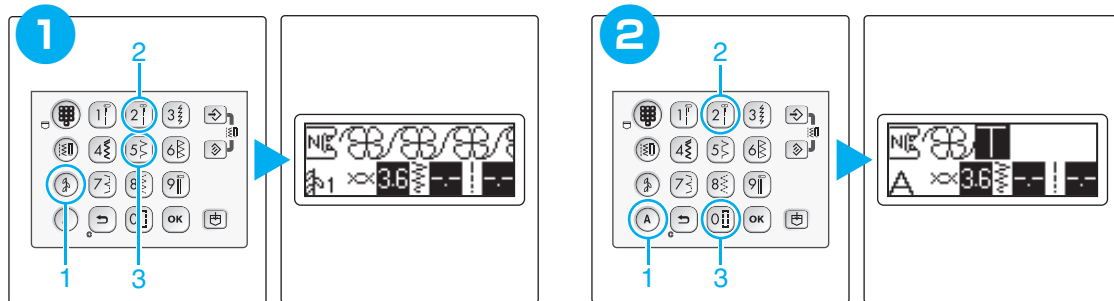
Kombinieren und Speichern von Mustern  
 Patronen combineren en opslaan  
 Combinación y almacenamiento de patrones  
 Kombinera och spara mönster  
 Kuvioiden yhdistely ja tallennus

Combinaison et enregistrement de motifs  
 Combinazione e salvataggio di disegni  
 Kombinere og lagre mønstre  
 Kombinering og lagring af mønstre  
 Сочетание различных рисунков строчек и сохранение в памяти

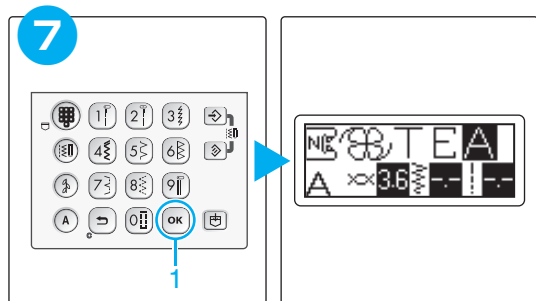
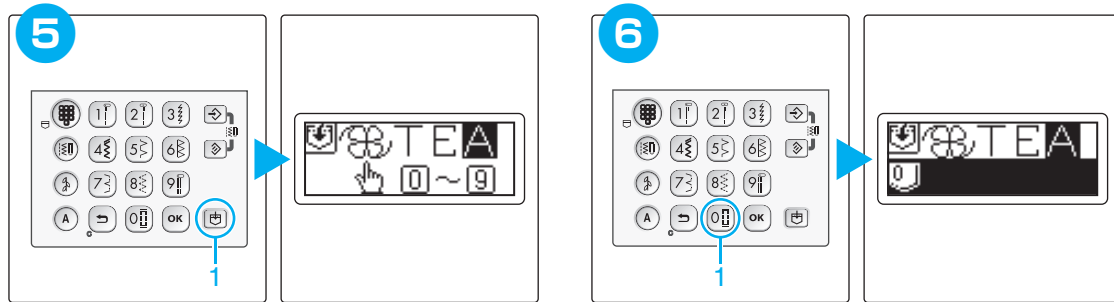
Example: Beispiel: Exemple: Voorbeeld: Esempio: Ejemplo:  
 Eksempel: Exempel: Eksempel: Esimerkki: Пример:



**Combining patterns** Kombinieren von Mustern/ Combinaison de motifs/ Patronen combineren/ Combinazione di disegni/  
 Combinación de patrones/ Kombinere mønstre/ Kombinera mönster/ Kombinering af mønstre/ Kuvioiden yhdistely/ Сочетание различных строчек



**Saving patterns** Speichern von Mustern/ Enregistrement des motifs/ Patronen opslaan/ Salvataggio di disegni/  
 Almacenamiento de patrones/ Lagre et mønstre/ Spara mönster/ Sådan gemmes mønstre/ Kuvioiden tallennus/ Сохранение рисунков в памяти



# Saved patterns' memo

Notizen für gespeicherte Muster  
Oppgslagen patronen  
Memoria de patrones guardados  
Kom ihåg för sparade mönster  
Tallennetut kuviot

Mémo des motifs enregistrés  
Promemoria disegni salvati  
Merknad om lagrede mønstre  
Liste over gemte mønstre  
Памятка для сохраненных рисунков



**Saved patterns** Gespeicherte Muster/ Motifs enregistrés/ Oppgslagen patronen/ Disegni salvati  
Patrones guardados/ Lagrede mønstre/ Sparade mönster/ Gemte mønstre/ Tallennetut kuviot/ Сохраненные рисунки

1	
2	
3	
4	
5	
6	
7	
8	
9	
0	

# Summary of stitch patterns

Übersicht der Stichmuster  
 Overzicht van steekpatronen  
 Resumen de patrones de costura  
 Översikt över mönster  
 Ompeleiden yhteenveto

Résumé des motifs de point  
 Riepilogo disegni/punti  
 Oppsummering av sømmønstre  
 Oversigt over stingmønstre  
 Рисунки строчек

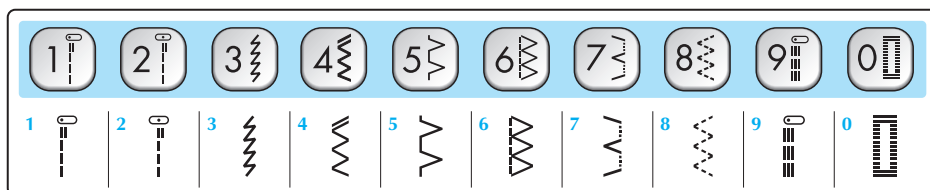


## Preset utility stitch

Voreingestellter Nutzstich/ Préréglage de point de couture courant/

Vooraf ingestelde naaisteek/ Punto utile preimpostato/ Costura con aplicaciones preajustada/ Forhåndsinnstilt nyttesøm/

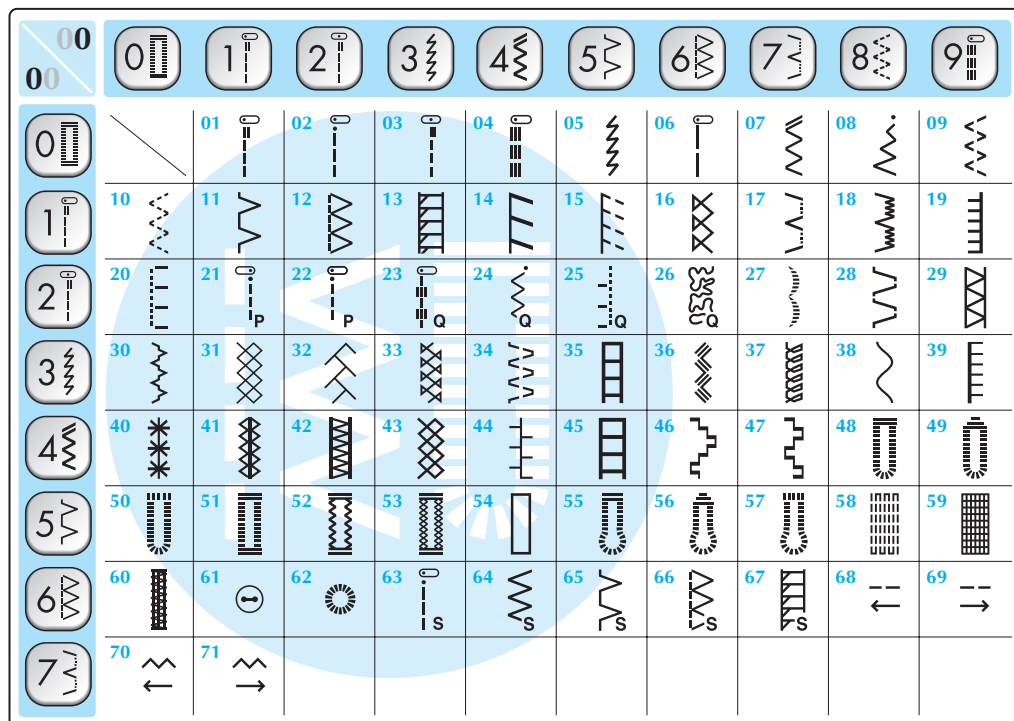
Förinställd nyttesöm/ Forindstillede brugssting/ Esiasetettu hyötöommel/ Стандартная обычная строчка



## Utility stitches

Nutzstiche/ Points de couture courants/ Naaisteken/ Punti utili/

Puntadas con aplicaciones/ Nyttesøm/ Nyttesømmar/ Brugssting/ Hyötöompeleet/ Обычные строчки



**1****Decorative stitches**Dekorstiche/ Points décoratifs/ Decoratieve steken/ Punti decorativi/  
Puntadas decorativas/ Dekorsøm/ Dekorativa sömmar/ Dekorationssting/ Koristeompeleet/ Декоративные строчки

00	0	1	2	3	4	5	6	7	8	9
00		01	02	03	04	05	06	07	08	09
1	10	11	12	13	14	15	16	17	18	19
2	20	21	22	23	24	25	26	27	28	29
3	30	31	32	33	34	35	36	37	38	39
4	40	41	42	43	44	45	46	47	48	49
5	50	51	52	53	54	55	56	57	58	59
6	60	61	62	63	64	65	66	67	68	69
9										99

**2****Decorative stitches**Dekorstiche/ Points décoratifs/ Decoratieve steken/ Punti decorativi/  
Puntadas decorativas/ Dekorsøm/ Dekorativa sömmar/ Dekorationssting/ Koristeompeleet/ Декоративные строчки

00	0	1	2	3	4	5	6	7	8	9
00		01	02	03	04	05	06	07	08	09
1	10	11	12	13	14	15	16	17	18	19
2	20	21	22	23	24	25	26	27	28	29
3	30	31	32	33	34	35	36	37	38	39

A

A

**Character stitches (Gothic font)** Buchstabenstiche (Schriftart Gotisch)/  
 Points caractères (police Gothic)/ Lettersteken (lettertype Gothic)/ Puntti caratteri (carattere gotico)/  
 Puntadas de caracteres (escritura gótica)/ Bokstavsøm (skrifttypen Gothic)/ Teckensnittssømmar (Gothic)/  
 Tegnsting (skrifttypen Gothic)/ Kirjontaompeleet (goottilainen kirjasin)/ Вышивание текста (печатный шрифт)

00	01	02	03	04	05	06	07	08	09
01	02	03	04	05	06	07	08	09	
10	11	12	13	14	15	16	17	18	19
20	21	22	23	24	25	26	27	28	29
30	31	32	33	34	35	36	37	38	39
40	41	42	43	44	45	46	47	48	49
50	51	52	53	54	55	56	57	58	59
60	61	62	63	64	65	66	67	68	69
70	71	72	73	74	75	76	77	78	79
80	81	82	83	84	85	86	87	88	89
90	91	92	93	94	95	96	97		

A

A

**Character stitches (Script font)** Buchstabenstiche (Schriftart Script)/  
 Points caractères (police Script)/ Lettersteken (lettertype Script)/ Puntti caratteri (carattere corsivo)/  
 Puntadas de caracteres (escritura decorada)/ Bokstavsøm (skrifttypen Script)/ Teckensnittssømmar (Script)/  
 Tegnsting (skrifttypen Script)/ Kirjontaompeleet (käskirjoituskirjasin)/ Вышивание текста (рукописный шрифт)

00	01	02	03	04	05	06	07	08	09
01	02	03	04	05	06	07	08	09	
10	11	12	13	14	15	16	17	18	19
20	21	22	23	24	25	26	27	28	29
30	31	32	33	34	35	36	37	38	39
40	41	42	43	44	45	46	47	48	49
50	51	52	53	54	55	56	57	58	59
60	61	62	63	64	65	66	67	68	69
70	71	72	73	74	75	76	77	78	79
80	81	82	83	84	85	86	87	88	89
90	91	92	93	94	95	96	97		



A



## Character stitches (Outline style) Buchstabenstiche (Umriss)/

Points caractères (style Contours)/ Lettersteken (opmaak Contour)/ Punti caratteri (stile contorno)/

Puntadas de caracteres (escritura con borde)/ Bokstavsøm (Outline-stil)/ Teckensnittssømmer (Konturstil)/

Tegnsting (Outline-stil)/ Kirjontaompeleet (ääriiviivatyli)/ Вышивание текста (контурный шрифт)

00	01	02	03	04	05	06	07	08	09
	A	B	C	D	E	F	G	H	I
	J	K	L	M	N	O	P	Q	R
	T	U	V	W	X	Y	Z	&	?
	_	0	1	2	3	4	5	6	7
	9	'	,	.	(	)	-	Ä	Å
	Ñ	ö	ø	ç	ü	ß	a	b	c
	e	f	g	h	i	j	k	l	m
	o	p	q	r	s	t	u	v	w
	y	z	ä	à	á	æ	ë	è	é
	ñ	ö	ò	ø	ì	ç	ù	ù	





English  
German  
French  
Dutch  
Italian  
Spanish  
Norwegian  
Swedish  
Danish  
Finnish  
Russian

885-U24  
Printed in China



XE0360-101①