

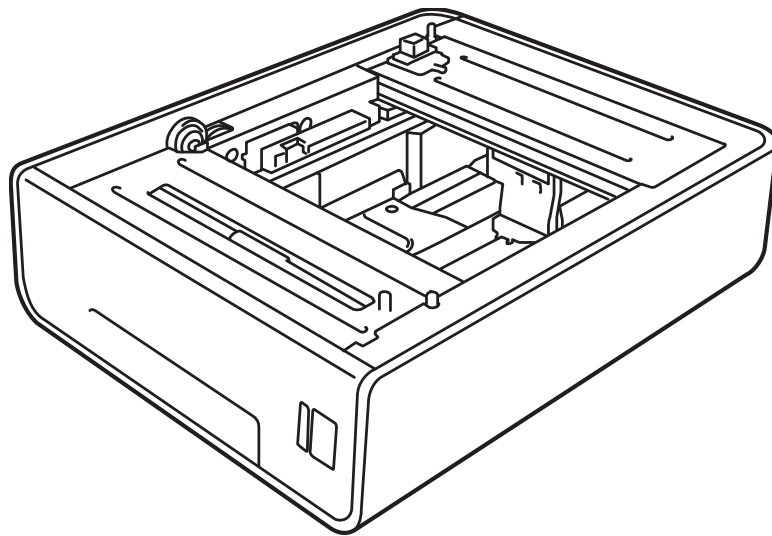


Lower Tray Unit for Color Laser Printer  
**PARTS REFERENCE LIST**

---

---

**MODEL: LT-300CL**



Read this list thoroughly before maintenance work.

Keep this list in a convenient place for quick and easy reference at all times.

## NOTE FOR USING THIS PARTS REFERENCE LIST

1. In the case of ordering parts, it is necessary to mention the following items:

- (1) Code
- (2) Q'ty
- (3) Description
- (4) Symbol (PCB No. etc.)

<Example>

	(1)	(2)	(3)	(4)	
REF.NO.	CODE	Q'TY	DESCRIPTION	SYMBOL	REMARK

Revision No.: marked on the **main printed circuit board (Main PCB)**

B48K056

..... Circuit board No.

2. Design-changed parts:

If any of the parts code is changed in this Parts List, one of the following symbols is indicated in the REMARKS column.

CHG (chg): The part code is changed for a new one in this Parts List.

ADD (add): The part code is newly added in this Parts List.

DEL (del) : The part code is deleted in this Parts List.

Symbol in capital letters indicates the latest parts change information in the page.

3. The original parts reference list is based on the information available in July 2009.

4. Parts are subject to change in design without prior notice.

## COUNTRIES AND AREAS

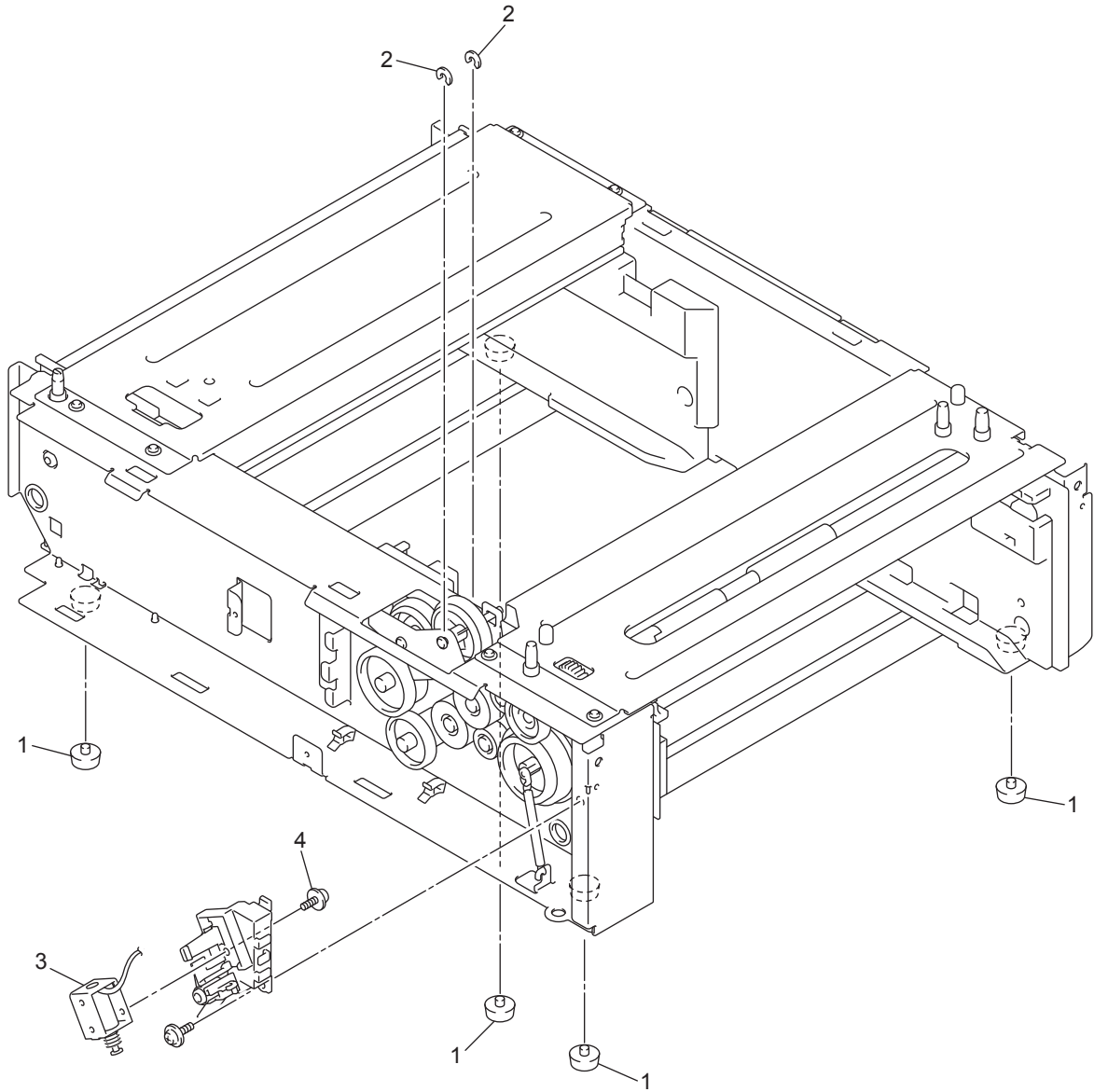
US: U.S.A.

CHN: China

# CONTENTS

1.	<u>FRAME UNIT &amp; DRIVE UNIT</u> .....	1
2.	<u>PAPER FEEDER</u> .....	3
3.	<u>PAPER TRAY</u> .....	5
4.	<u>COVERS</u> .....	7
5.	<u>PCB</u> .....	9
6.	<u>PACKING MATERIALS</u> .....	11
7.	<u>PERIODICAL MAINTENANCE PARTS</u> .....	13

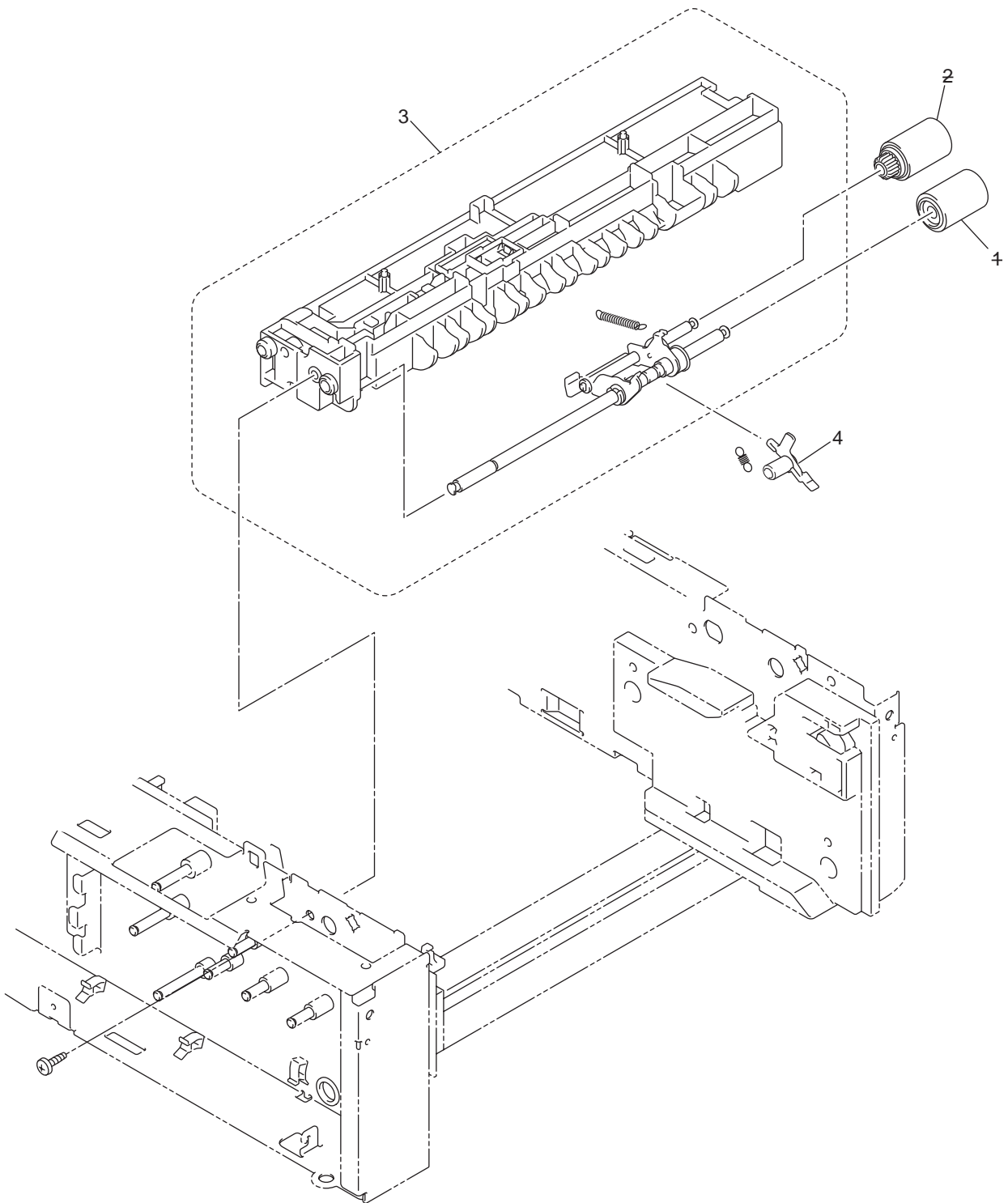
1.FRAME UNIT&DRIVE UNIT



1. FRAME UNIT&DRIVE UNIT

REF No.	CODE	Q'TY	DESCRIPTION	REMARKS
1	UH2208001	4	RUBBER FOOT	
2	LJ1175001	2	COLLAR6	
3	LJ9503001	1	T2 SOLENOID ASSY	
4	U11776001	1	SCREW FLANGED M3X3.5	

## 2.PAPER FEEDER

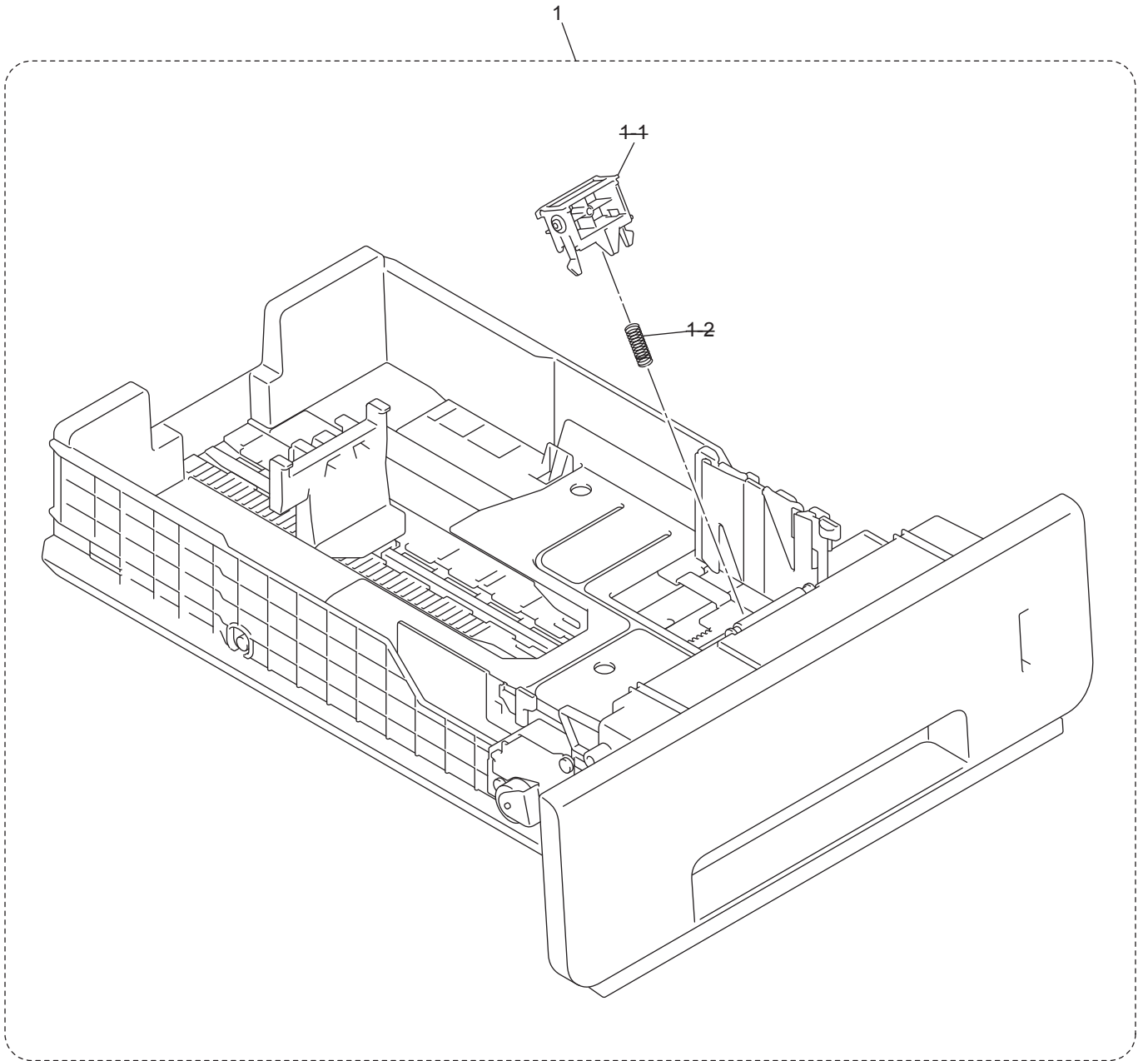


2. PAPER FEEDER

REF No.	CODE	Q'TY	DESCRIPTION	REMARKS
1	LM3454002	4	T2 SEPARATION ROLLER ASSY*	del
2	LU0496002	4	T2 PAPER FEED ROLLER ASSY1*	del
3	LY0669001	1	T2 PAPER FEED FRAME UNIT	
4	LY0667001	1	EDGE ACTUATOR BC	add

\*REF No. 1, 2 and REF No. 1-1, 1-2 listed on "3. PAPER TRAY" were assembled as PAPER FEEDING KIT 2 (SP) (LY1548001) listed on "7. PERIODICAL MAINTENANCE PARTS". When ordering these parts, please order LY1548001.

### 3.PAPER TRAY



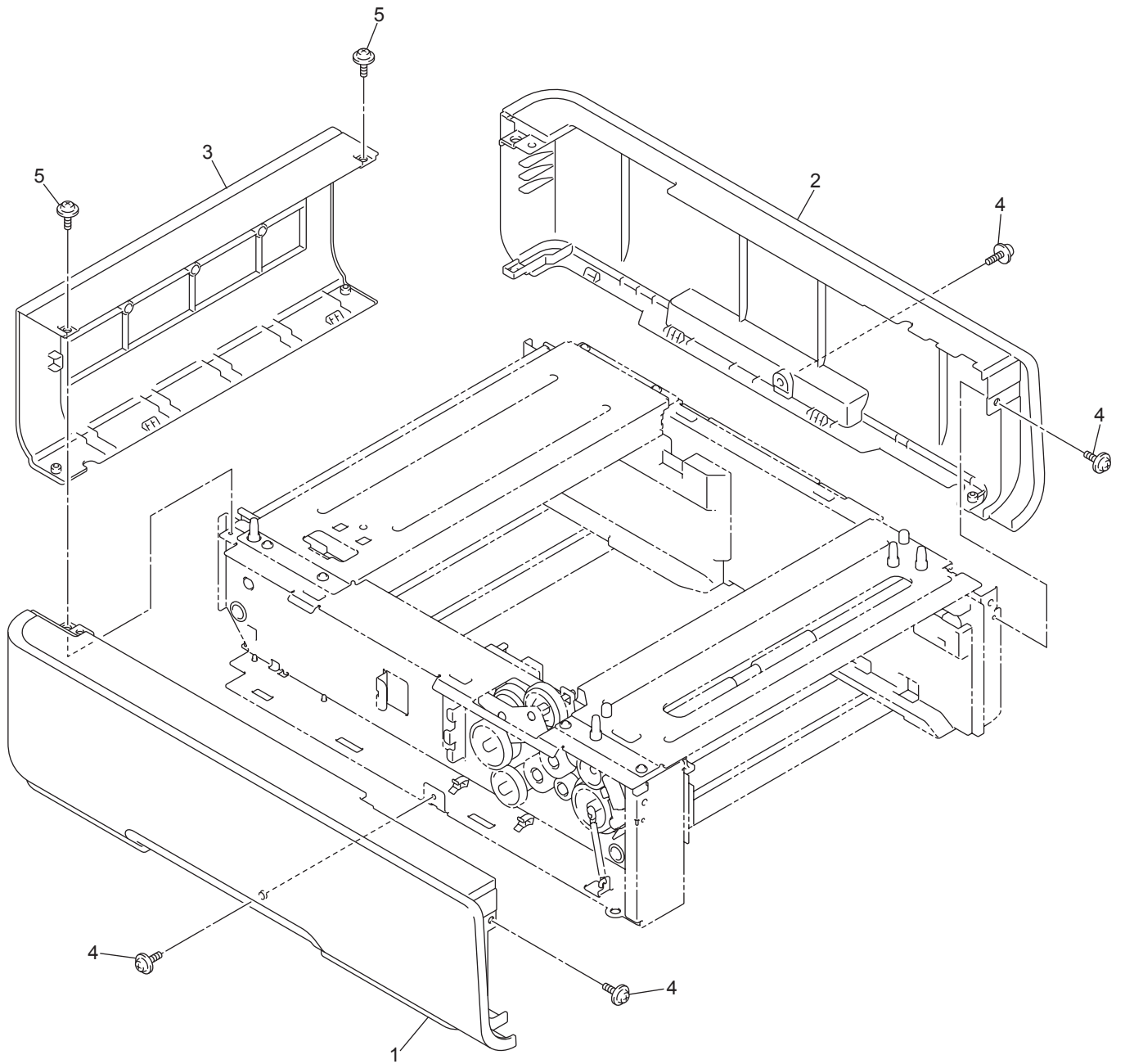


### 3. PAPER TRAY

REF No.	CODE	Q'TY	DESCRIPTION	REMARKS
1	LY1674001	1	T2 PAPER TRAY UNIT (SP)	chg
<del>1-1</del>	<del>LY0952001</del>	<del>4</del>	<del>T2 SEPARATION PAD ASSY</del>	<del>DEL</del>
<del>1-2</del>	<del>LY0679001</del>	<del>4</del>	<del>T2 SEPARATION PAD SPRING</del>	<del>DEL</del>

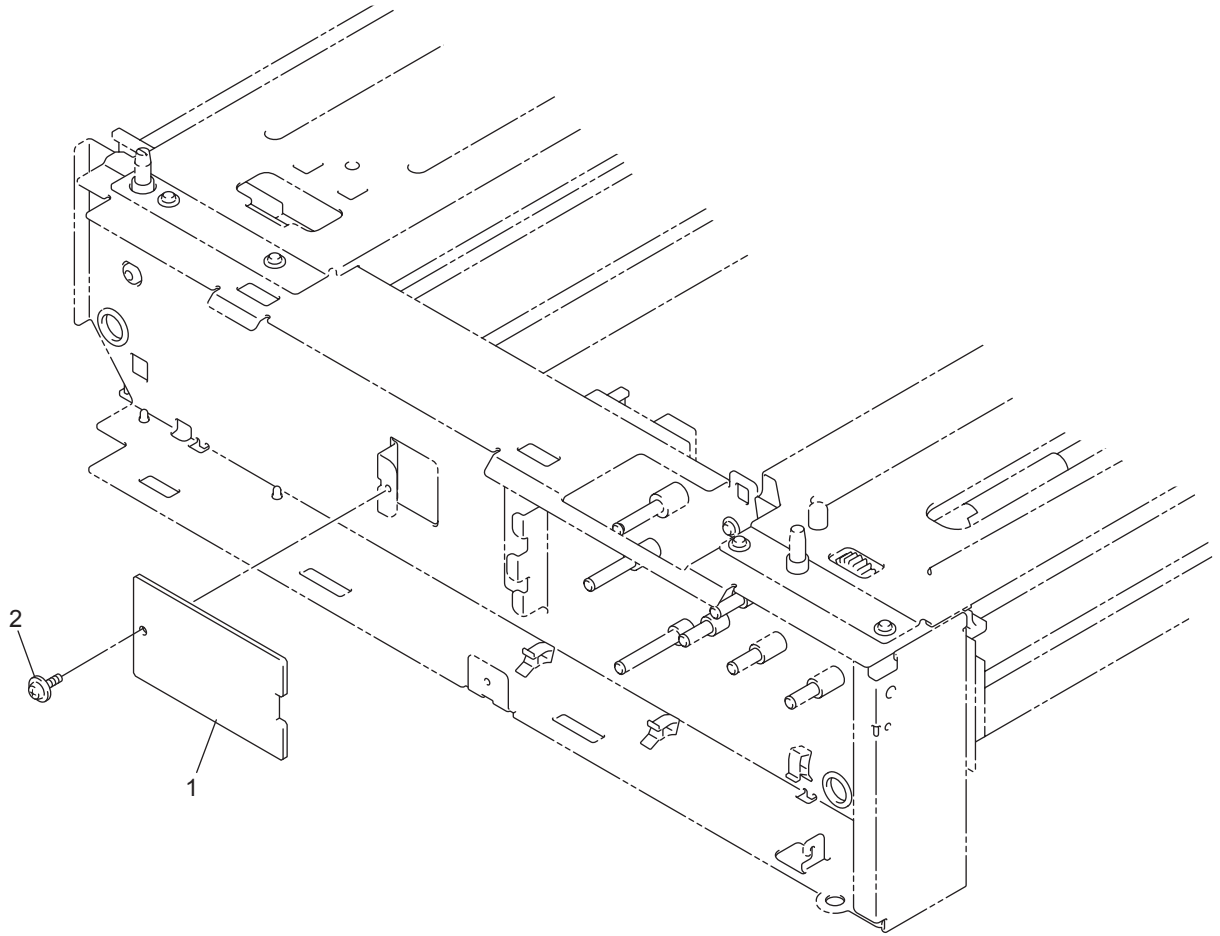
\*REF No. 1-1, 1-2 and REF No. 1, 2 listed on "2. PAPER FEEDER" were assembled as PAPER FEEDING KIT 2 (SP) (LY1548001) listed on "7. PERIODICAL MAINTENANCE PARTS".  
When ordering these parts, please order LY1548001.

## 4. COVERS



#### 4. COVERS

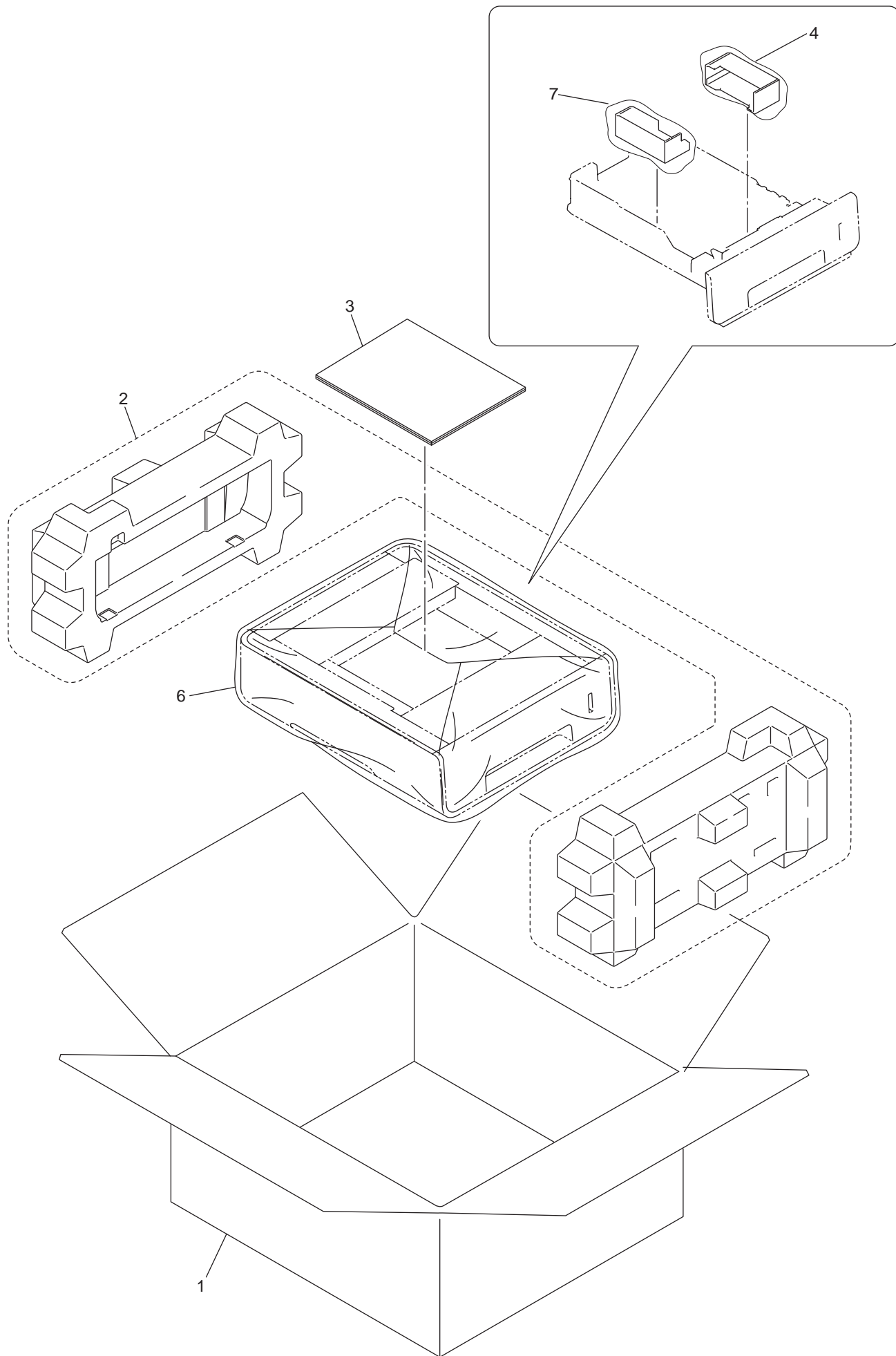
REF No.	CODE	Q'TY	DESCRIPTION	REMARKS
1	LY0686001	1	T2 COVER LEFT	
2	LY0687001	1	T2 COVER RIGHT	
3	LY0688001	1	T2 COVER REAR	
4	LU5691001	4	TAPTITE CUP S M3X6 SR	
5	LY0811001	2	TAPTITE CUP S M3X10 SR	



5. PCB

REF No.	CODE	Q'TY	DESCRIPTION	SYMBOL	REMARKS
1	LM9024001	1	T2 RELAY PCB ASSY	B512183	
2	LU5691001	1	TAPTITE CUP S M3X6 SR		

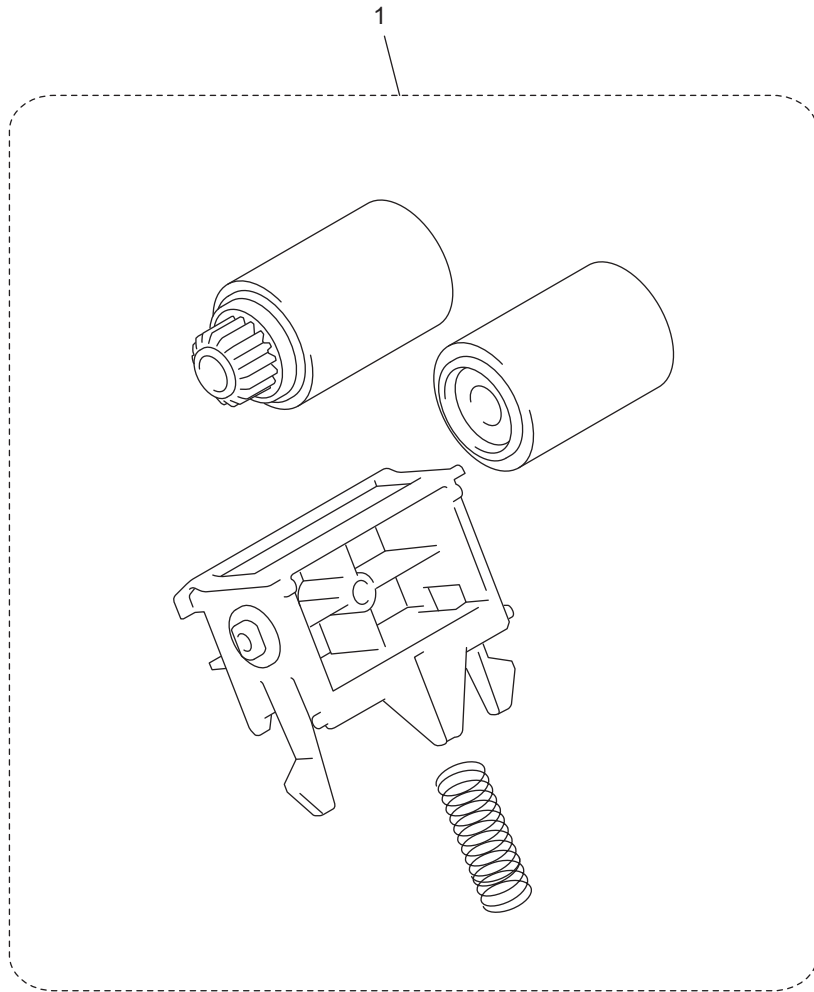
6. PACKING MATERIALS



6. PACKING MATERIALS

REF No.	CODE	Q'TY	DESCRIPTION	REMARKS
1	LY1122001	1	T2 CARTON EXCEPT FOR CHN	
1	LY1513001	1	T2 CARTON FOR CHN	
2	LY0690001	1	T2 STYROFOAM PAD ASSY	
3	LY1556001	1	SET GUIDE	
4	LY5864001	1	PAPER TRAY HOLD PAD S ASSY (SP)	chg
5	<del>LE3593001</del>	4	<del>BAG 190X290H P</del>	del
6	LJ5584001	1	BAG 700X800H	
7	LU6727001	1	PAPER TRAY HOLD PAD L ASSY (SP)	add
(8)	LM2157001	2	RECYCLE MARK FOR T2 STYROFOAM PAD ASSY FOR KOR	ADD

7.PERIODICAL MAINTENANCE PARTS





7. PERIODICAL MAINTENANCE PARTS

REF No.	CODE	Q'TY	DESCRIPTION	REMARKS
1	LY1548001	1	PAPER FEEDING KIT 2 (SP)	ADD