

BROTHER BRUSHLESS DC GEARMOTORS

WIDE SELECTION 50-400W • 12, 24, 48V DC



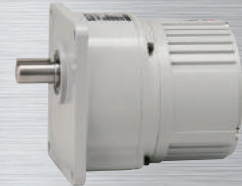
Right Angle (Hollow Bore)



Right Angle (Foot Mount)



Parallel (Foot Mount)

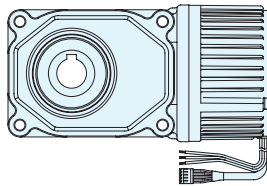


Parallel (Flange Mount)

SERIES MAKEUP WIDE SELECTION

VF3S Right Angle Hollow Bore

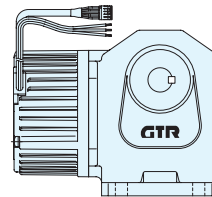
Includes motor Includes brake



Motor Power	Reduction Ratio	*RPM Range	Torque Range N-m	Torque Range In-lbs
100W (12V/24V/48V)	1/10~1/60	1~250	2.45~51.9	21.68~459.31
200W (24V/48V)	1/10~1/240	.7~250	4.90~137	43.36~1212.45
400W (24V/48V)	1/10~1/240	.7~250	9.40~270	83.19~2389.5

VHL Right Angle Shaft, Foot Mount

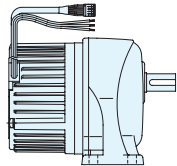
Includes motor Includes brake



Motor Power	Reduction Ratio	*RPM Range	Torque Range N-m	Torque Range In-lbs
100W (12V/24V/48V)	1/10~1/240	.7~250	2.94~77.4	26.01~684.99
200W (24V/48V)	1/5~1/240	.7~500	2.45~137	21.68~1212.45
400W (24V/48V)	1/5~1/240	.7~500	5.4~284	47.79~2513.40

VGL Parallel Shaft, Foot Mount

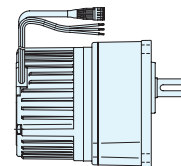
Includes motor Includes brake



Motor Power	Reduction Ratio	*RPM Range	Torque Range N-m	Torque Range In-lbs
50W (12V/24V)	1/5~1/200	.8~500	.76~30.4	6.72~269.04
100W (12V/24V/48V)	1/5~1/200	.8~500	1.67~64.7	14.77~572.59
200W (24V/48V)	1/5~1/200	.8~500	3.04~118	26.90~1044.3
400W (24V/48V)	1/5~1/200	.8~500	5.4~235	47.79~2079.75

VGK Parallel Shaft, Flange Mount

Includes motor Includes brake



Motor Power	Reduction Ratio	*RPM Range	Torque Range N-m	Torque Range In-lbs
50W (12V/24V)	1/5~1/200	.8~500	.76~30.4	6.72~269.04
100W (12V/24V/48V)	1/5~1/200	.8~500	1.67~64.7	14.77~572.59
200W (24V/48V)	1/5~1/200	.8~500	3.04~118	26.90~1044.3
400W (24V/48V)	1/5~1/200	.8~500	5.4~235	47.79~2079.75

*Based on a drive setting of:
Max: 2500 RPM
Min: 150 RPM

brother
at your side

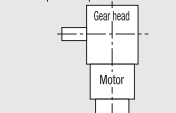
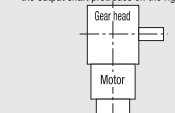
REDEFINING THE ART OF EFFICIENCY

Visit www.BrotherGearmotors.com to configure a part number.

MODEL AND TYPE DESIGNATIONS

Brother Brushless DC Gearmotors are categorized under the designation codes below. Please specify these codes when placing an order or making an inquiry.

Motor Models	Series	Mounting Type	Motor Type	Frame No.	Shaft Arrangement	Nominal Reduction Ratio	Common Code	Motor Power	Voltage	Option
	V	GL	C	12		30	N	50	L1	
	V	HL	D	28	L	80	N	200	L4	X
	V	F3S	C	25		30	N	200	L2	
	①	②	③	④	⑤	⑥	⑦	⑧	⑨	⑩

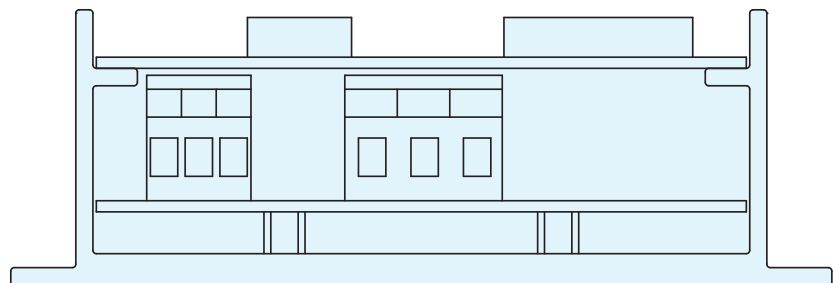
①Series	V : V Series (Brushless Variable-Speed Gearmotor)		
②Mounting Type	GL : Parallel Shaft (Foot Mount)		
	GK : Parallel Shaft (Flange Mount)		
	HL : Right Angle Shaft (Foot Mount)		
	F3S : Right Angle Hollow Bore		
③Motor Type	C : Includes Motor		
	D : Includes Brake-motor		
④Frame Number	Output Shaft Diameter (Hollow Bore Inner Diameter)		
⑤Shaft Arrangement	Parallel Shafts, Right Angle Hollow Bore	Right Angle Shafts	
	Blank: Not Applicable	L: Looking from the input-shaft side, the output shaft protrudes on the left. 	R: Looking from the input-shaft side, the output shaft protrudes on the right. 
⑥Nominal Reduction Ratio	5 : 1 / 5 240 : 1 / 240		
⑦Common Code	N : Shared Code		
⑧Motor Power	50 : 50W		
	100 : 100W		
	200 : 200W		
	400 : 400W		
⑨Voltage	L1 : DC12V		
	L2 : DC24V		
	L4 : DC48V		
⑩Option	Blank : Standard Specification		
	X : Designates a special option. Please refer to the Brother Gearmotor Brushless Catalog pages T28 and T29 for a list of options along with instructions on how to order.		



Brother Brushless DC Catalog

PERFORMANCE MATCHED DRIVES

Performance matched drives available for Brother Brushless DC gearmotors. Drives are easy and convenient to use while giving you peace of mind with performance matched components. Inquire today.



brother
at your side

BrotherGearmotors.com

Brother International Corporation, Gearmotor Division
866-523-6283 • Fax: 908-575-3743
© 2017 Brother International Corporation

November 2017