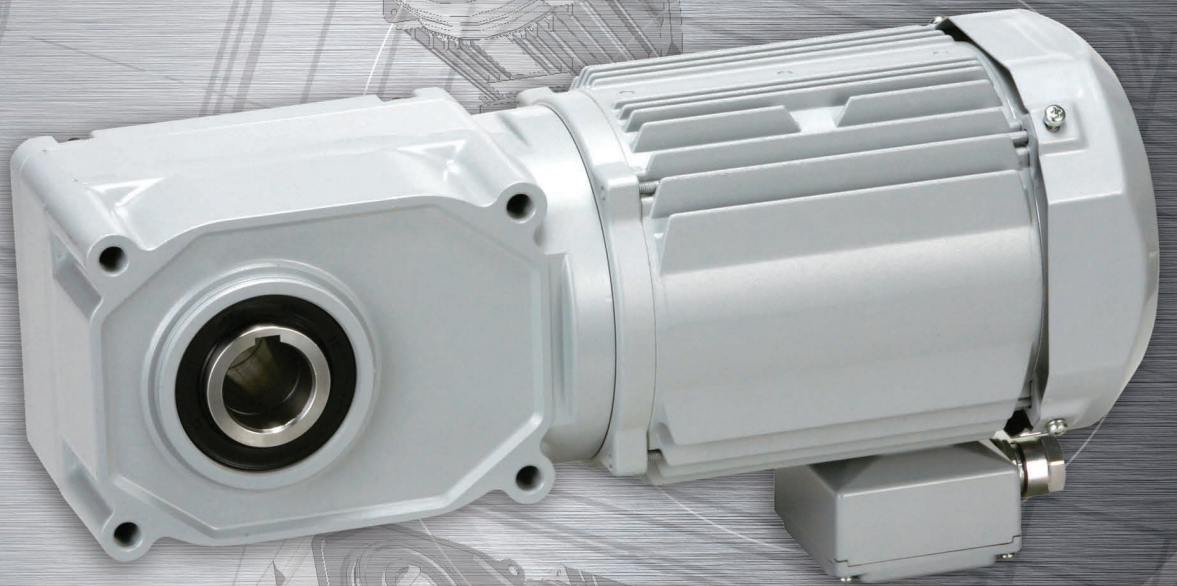


brother

GEARMOTOR DIVISION

Designed for reliability. Built for endurance.



GLOBAL REACH AND RESOURCES POWERED BY MORE
THAN 50 YEARS OF GEAR MANUFACTURING **EXPERTISE**

PRODUCTS AND SERVICES TO CUSTOMERS
AROUND THE WORLD IN 40 COUNTRIES

LEADER IN **DESIGN & INNOVATION**

INNOVATIVE, AWARD-WINNING AND HIGH-QUALITY PRODUCTS

PREMIER CUSTOMER **SUPPORT**

EXCELLENT CUSTOMER SERVICE WITH A
DEDICATED, PROFESSIONAL WORKFORCE


"Brother's high efficiency gearmotors have allowed us to reduce our customers' electrical consumption. The sealed units have eliminated service calls for leaky gearboxes. Brother's high standards, as evidenced by their ISO certifications, ensure we receive a quality product which we then pass on to our customers."

Lisa Myers

Purchasing Manager, FP Developments, Williamstown, NJ

Brother International Corporation

Brother International Corporation was formed in April 1954 with a handful of employees in mid-town Manhattan. Today, its corporate offices serve as the Americas' headquarters of the global group of companies in the Brother family. Brother Americas employs more than 750 people (approximately 400 in New Jersey) with revenues exceeding \$2 billion. The Brother global group of companies has more than 30,000 employees and \$7 billion in sales worldwide representing 40 countries and regions with 15 company-owned production sites... and growing.



Brother Gearmotors offers a wide range of high-quality, highly reliable power transmission components including AC gearmotors and reducers. Brother's gearmotors support demanding industries, including food and beverage processing, packaging machinery, and material handling technologies, and is now poised for considerable growth with an expanded team and a new quick-assembly operation in Tennessee.

US Manufacturing Facility

Brother Gearmotors' centrally located, state-of-the-art manufacturing facility in Bartlett, Tennessee is both ISO 9001:2008 and ISO 14001:2004 certified and allows Brother to offer an even higher level of service and broader product mix to customers.

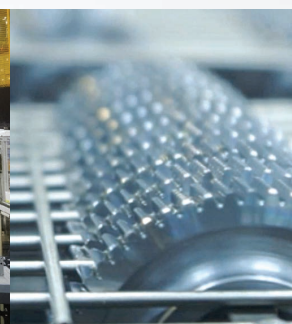
- Over 27,000 unique SKUs available in Tennessee facility
- H1 food grade grease available for incidental food contact
- Dedicated US maintenance and repair hub for enhanced customer service
- Faster deliveries with 3-5 day average lead time on orders
- On-site manufacturing technologies and best-in-class equipment
- Same-day emergency or next-day delivery available for certain quantities

International Factory

- 560,000 units produced per year
- Largest production capacity among OEM gear manufacturers (1.5 million/month)
- World's largest capacity of bevel gear cutting (40,000 pieces per day)
- In-house production, from design to manufacturing
- More than 90% of our products are manufactured in house
- Self-developed gear technology
- Custom die design, die making, die casting and custom motor designs



Brother's gearmotor distribution and manufacturing facility in Bartlett, TN



WHAT SETS BROTHER GEARMOTORS APART?

PERFORMANCE

- Reduce costly downtime with virtually maintenance-free gearmotors
- Discover expanded flexibility with a broader range of mounting configurations
- Enhance protection with a long-lasting paint coating that doesn't need replacing

RESPONSIVENESS

- Faster deliveries with 3-5 day average lead time on orders
- The industry's premier customer service teams
- Dedicated, US hub for enhanced support

STRENGTH

- Superior industry knowledge with decades of real-world experience
- Rugged products manufactured on state-of-the-art equipment
- Innovative research and development teams in multiple locations

TRUST

- The global power of the Brother brand instills customer confidence and provides financial strength
- The entire Brother Gearmotors Team is committed to your complete satisfaction and to delivering today's finest power transmission products
- Our dedication to innovation, energy-efficiency and customer service ensure long-term partnership with our customers around the world

CONVENIENCE

- All of your gearmotors' needs easily fulfilled by one respected company
- Integrated fields of global support, from engineering and manufacturing to sales and customer service
- Enhanced convenience with CAD DXF, PDF, and 3D Models available for download on BrotherGearmotors.com

RELIABILITY

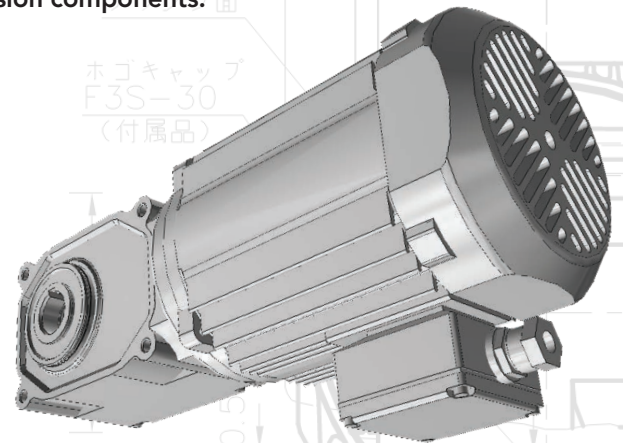
- Gearmotors that are sealed for life ensure long-term peace of mind
- Achieve cost savings and extended product life thanks to a more compact, quiet, energy-efficient design when compared to ie1 standard efficiency
- Increase operational efficiencies through reduced time and labor

PRODUCT INFORMATION

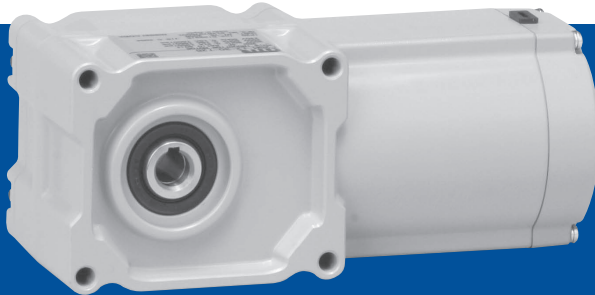
Brother Gearmotors is one of the world's largest fine-pitch gear manufacturers and meets the industry demand for smaller, lighter, reliable and energy-efficient power transmission components.

Brother gearmotors are specially designed for optimized performance:

- Light, reliable and compact in size
- High torque at low speed
- Sealed-for-life design delivers maximum efficiency and reduced labor costs
- Standard high-grade grease for lifetime lubrication and reduced maintenance/downtime
- High-quality, durable, e-coat paint to withstand the toughest environments
- More efficient than worm gearboxes as a result of hardened hypoid gearing



BROTHER GEARMOTOR PRODUCTS



HOLLOW BORE GEARMOTOR
(Direct Mounting)

MID SERIES

1/8 - 3HP
1:5-1; 1500
1 & 3 Phase
Optional-IP 65, Brake

MINI SERIES

1/50 - 1/10HP
1:5; 1;240
1 & 3 Phase
Optional-IP 65*, Brake

RIGHT ANGLE GEARMOTOR

MID SERIES

1/8 - 3HP
1:5-1; 1500
1 & 3 Phase
Optional-IP 65, Brake

MINI SERIES

1/50 - 1/10HP
1:5; 1800
1 & 3 Phase
Optional-IP 65*, Brake



INLINE GEARMOTOR

MID SERIES

1/8 - 3HP
1:5-1; 1500
1 & 3 Phase
Optional-IP 65, Brake

MINI SERIES

1/50 - 1/6HP
1:5; 1800
1 & 3 Phase
Optional-IP 65*, Brake

"I've been using Brother Gearmotors for 15 years because they offer superior dependability and quality construction. These motors have a long life and offer easy installation through their shaft construction, which translates into a maintenance-free, highly reliable product."

Clifford Smith

President, Modular Packaging Systems, Inc., Randolph, NJ

brother
GEARMOTOR DIVISION

Designed for reliability. Built for endurance.



INDUSTRIES SERVED

Brother Gearmotors offers a wide range of ultra-reliable, sub-fractional AC gearmotors and reducers for a variety of applications and industries:

INDUSTRIES

- Packaging machinery
- Food/beverage processing
- Conveyors
- Labeling systems
- Material handling
- Machine tools
- Industrial machining
- Refrigeration equipment manufacturing
- Printing machinery
- Bakery equipment
- Agriculture machinery
- And more

APPLICATIONS

- Industrial dishwashing machines
- Pumps and mixers
- Machine tool builders
- Homeland security (gates, rotating lights)
- Frozen beverage dispensers
- Car wash equipment
- And more

brother
GEARMOTOR DIVISION
at your side

BrotherGearmotors.com

Brother International Corporation
Gearmotor Division
866-523-6283 • Fax: 908-575-3743

© 2015 Brother International Corporation

Proud members of:

